

## 3M™ Flexographic Plate Mounting Systems Selection Guide

Product Number	Application Thickness Inches (mm)	Manufactured Target Thickness Inches (mm)	Description	Plates	Cylinders	Color	Features
<b>400 Series — 3M™ Flexomount™ Solid Plate Mounting Tapes</b>							
411DL, 411	0.015 (0.38)	0.015 (0.38)	Gray double coated tape with a soft rubber adhesive on each side of a vinyl carrier. Available in single and double liner.	P/R	SS/SL	Gray	Gray vinyl tapes with high adhesion. Helps reduce edge lifting. Helps minimize pin holing on solid work.
412DL, 412	0.020 (0.51)	0.020 (0.51)		P/R	SS/SL	Gray	
447DL, 447	0.010 (0.25)	0.010 (0.25)		P/R	SS/SL	Gray	
413DL	0.015 (0.38)	0.015 (0.38)	Black double coated tape with a firm rubber adhesive on each side of a vinyl carrier. Available only in double liner.	P/R	SS/SL	Black	Black vinyl with lower adhesion. Higher temperature and solvent resistance. Helps minimize pin holing on solids.
414DL	0.020 (0.51)	0.020 (0.51)		P/R	SS/SL	Black	
<b>18 Series — 3M™ Cushion-Mount™ Plus Firm Combination Plate Mounting Tapes</b>							
E1815H, E1815, 1815M	0.015 (0.38)	0.017 (0.43)	Differential acrylate adhesive system on each side of a foam carrier, protected by a release liner on one side.	P	SS/SL	Blue	Better solid ink density than the standard combination printing tapes. Clean removal from plate and print cylinder.
E1820H, E1820, 1820M	0.020 (0.51)	0.022 (0.56)		P	SS/SL	Blue	
E1840, E1840H	0.040 (1.02)	0.042 (1.07)		P	SS/SL	Blue	
E1860, E1860H	0.060 (1.52)	0.062 (1.57)		P	SS/SL	Blue	
L1820	0.020 (0.51)	0.022 (0.56)		P	SS/SL	Blue	
<b>17 Series — 3M™ Cushion-Mount™ Plus Medium Firm Combination Plate Mounting Tapes</b>							
E1715H, E1715	0.015 (0.38)	0.017 (0.43)	Differential acrylate adhesive system on each side of a foam carrier, protected by a release liner on one side.	P	SS/SL	Teal	Quality results when plate contains slightly more solids in a combination of solid and halftone images.
E1720H, E1720, 1720M	0.020 (0.51)	0.022 (0.56)		P	SS/SL	Teal	
L1720	0.020 (0.51)	0.022 (0.56)		P	SS/SL	Teal	
<b>15 Series — 3M™ Cushion-Mount™ Plus Medium Combination Plate Mounting Tapes</b>							
E1515, E1515H	0.015 (0.38)	0.017 (0.43)	Differential acrylate adhesive system on each side of a foam carrier, protected by a release liner on one side.	P	SS/SL	Purple	High quality, medium combination print. Adhesive removes cleanly from the print plate and the print cylinder.
E1520, E1520H	0.020 (0.51)	0.022 (0.56)		P	SS/SL	Purple	
L1520	0.020 (0.51)	0.022 (0.56)		P	SS/SL	Purple	
<b>10 Series — 3M™ Cushion-Mount™ Plus Standard Combination Plate Mounting Tapes</b>							
E1015H, E1015, 1015, 1015M	0.015 (0.38)	0.017 (0.43)	Differential acrylate adhesive system on each side of a foam carrier, protected by a release liner on one side.	P	SS/SL	White	Most versatile 3M™ Cushion-Mount™ Plus Tapes. Effectively prints most types of flexographic printing.
E1015-15H, E1015-15, 1015-15	0.015 (0.38)	0.015 (0.38)		P	SS/SL	White	
E1020H, E1020, 1020, 1020M	0.020 (0.51)	0.022 (0.56)		P	SS/SL	White	
1020R	0.020 (0.51)	0.022 (0.56)		P/R	SS/SL	White	
E1020-20H, E1020-20, 1020-20	0.020 (0.51)	0.020 (0.51)		P	SS/SL	White	
E1040H, E1040, 1040	0.040 (1.02)	0.042 (1.07)		P	SS/SL	White	
E1060H, E1060, 1060	0.060 (1.52)	0.062 (1.57)		P	SS/SL	White	
L1020	0.020 (0.51)	0.022 (0.56)		P	SS/SL	White	
<b>13 Series — 3M™ Cushion-Mount™ Plus Medium Combination Plate Mounting Tapes</b>							
E1315H, E1315	0.015 (0.38)	0.017 (0.43)	Differential acrylate adhesive system on each side of a foam carrier, protected by a release liner on one side.	P	SS/SL	Yellow	High quality, medium-soft combination print. Adhesive removes cleanly from the print plate and the print cylinder.
E1320H, E1320	0.020 (0.51)	0.022 (0.56)		P	SS/SL	Yellow	
L1320	0.020 (0.51)	0.022 (0.56)		P	SS/SL	Yellow	

Note: This technical information and data should be considered representative or typical only and should not be used for specification purposes.

DL – Double Liner; E – Air Release, Standard Plate Side Adhesion; EH – Air Release, High Plate Side Adhesion; K – High Sleeve Side Adhesion for Composite Sleeves; L – Air Release, Less Removal Force and Plate Damage; M – Modified Plate Side Adhesion; P – Photopolymer Plates; R – For Rubber Plates; S – High Adhesion on Cylinder/Sleeve Side; SL – Sleeve; SS – Stainless Steel Cylinder

**3M** Science.  
Applied to Life.™

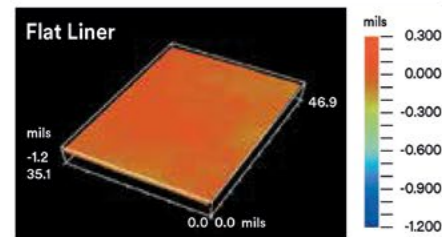
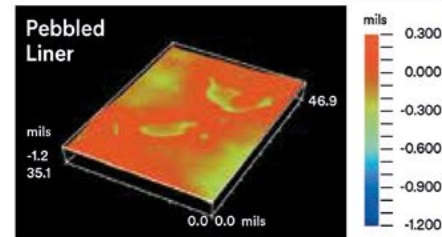
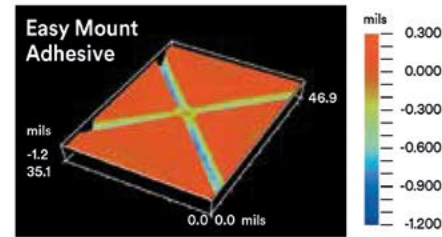
Balancing solids and dots for customer satisfaction.

# Wide choice of adhesives, foams and thickness for the results your customers demand.

For halftone work where dot gain is a concern, a softer tape optimizes reproduction. When solids and dots share the plate, a combination tape can properly balance the result. When your customer requires solid ink and crisp lines, you'll want a firm, high density mounting tape.

From the wide 3M selection, you can find the adhesives, foams, and thickness for the print quality that customers demand and expect. You'll also find choices to meet your handling requirements for:

- Mounting ease and positioning accuracy
- Easy, clean removal from plate and cylinder



Microscopic view of adhesive surface measured with interferometer.

## E-Series Tapes with Easy Mount Adhesive

**On easy with reduced air entrapment.** Unlike flat or pebbled liners, E-Series liners are crosshatched. This imprints unique micro-channels into the adhesive that allows air to flow throughout. Air bubbles disappear from between the tape and plate, and between the tape and cylinder or sleeve for virtually bubble-free mounting. Setup is faster with smoother surfaces for cleaner print quality and higher productivity.

**Stays on with reduced edge-lifting.** Exclusive 3M plate-side adhesive maintains tight contact. Saves the prep time, downtime and labor of sealing plate edges.

**Peels off easily to reduce plate damage.** Peels off so easily you can virtually eliminate plate back treatment. You're less likely to damage plates, so you save time, labor and money.

**Bubble-free print quality.** Prevent blemishes in screen and process printing. Help assure proper registration.

## EH-Series Adhesive to hold the edge on small diameter cylinders

3M EH-Series Tapes combine the air-release of 3M E-Series Tapes with higher plate side adhesion to resist edge lifting on cylinder diameters as small as 2 inches.

## L-Series Tapes with Less Removal Force

3M L-Series Tapes combine the air-release feature of 3M E-Series and H-Series Tapes. They are designed to provide easy and clean removal of printing plates across a wide range of printing applications with excellent resistance to plate lifting.



	Solid Printing	Combination Printing							Process Printing
	400 Series Tapes: Solid	18 Series: Firm	17 Series: Medium Firm	15 Series: Medium	10 Series: Standard	13 Series: Medium Soft	19 Series: Light Medium	12 Series: Light	11 Series: Process
10% Highlight									
40% Midtone									
Reverse									
100% Solid									
	Uniform coverage of solids when halftone dot reproduction is not critical.	When plate contains mostly solids in a combination of solid and halftone images.	When plate contains slightly more solids in a combination of solid and halftone images.	For high speed printing with fine type reverses and expanded color gamut.	When solid and halftone areas are equally important.	For high speed printing of combination work when halftone areas exceed solid.	Improved tone reproduction at high speed when process and halftone images predominate.	Low density maximizes dot reproduction for high speed process and screen printing.	Low density maximizes dot reproduction for high quality process work and screen printing.
	447, 447DL 411, 411DL, 413DL 412, 412DL, 414DL	E1815, E1815H, 1815M E1820, E1820H, 1820M E1840, E1840H E1860, E1860H L1820	E1715, E1715H E1720, E1720H, 1720M L1720	E1515, E1515H E1520, E1520H L1520	E1015, E1015H, 1015, 1015M E1020, E1020H, 1020, 1020M, 1020R E1040, E1040H, 1040 E1060, E1060H, 1060 L1020	E1315, E1315H E1320, E1320H L1320	E1915, E1915H, E1915S, E1915HS 1915M E1920, E1920H, E1920S, E1920HS, 1920M, 1920S L1920, L1920S	E1215, E1215H E1220, E1220H L1220	E1115, E1115H, 1115 E1120, E1120H, 1120, L1120

DL: Double Liner

E: Air Release, Standard Plate Side Adhesion

EH: Air Release, High Plate Side Adhesion

K: High Sleeve Side Adhesion for Composite Sleeves

L: Air Release, Less Removal Force and Plate Damage

L: Air Release, Less Removal Force and Plate Damage

M: Modified Plate Side Adhesion

R: For Rubber Plates

S: High Sleeve Side Adhesion for Urethane Sleeves

Note: Additional calipers available for specialized needs.